

PART OF THE NE 1/4 OF SECTION 19, T.7N., R.1W., S.L.B. & M.  
AND AMENDED LOT 5 OF SKYLINE ESTATES SUB. NO. 1  
**SKYLINE ESTATES SUBDIVISION NO. 3**

151

TAXING UNIT: 11

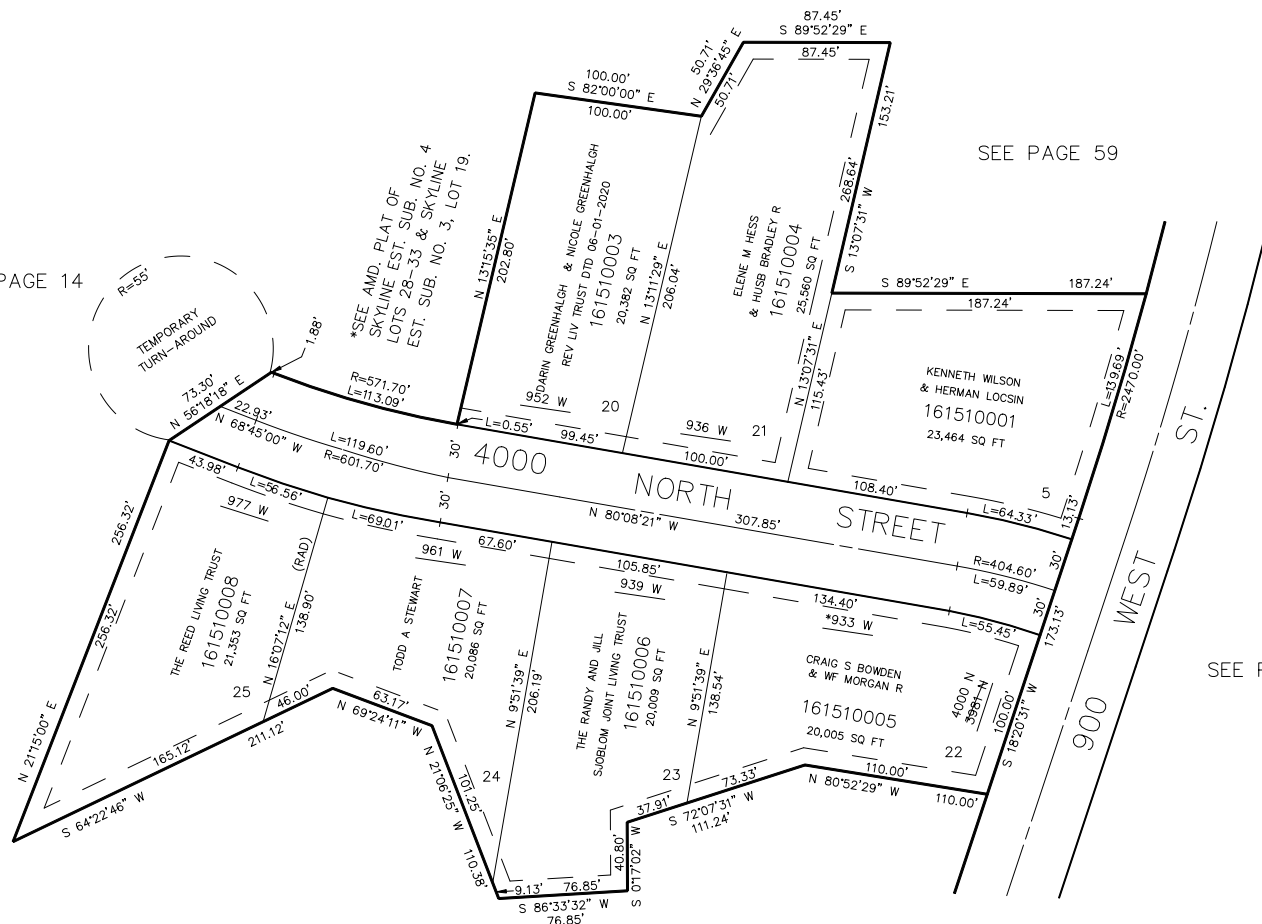
IN PLEASANT VIEW CITY

SCALE 1" = 60'

SEE PAGE 150

SEE PAGE 59

SEE PAGE 14



SEE PAGE 14

SEE PAGE 14

\* ADDRESS CORRECTION  
10-SEP-2015 E# 2755128

10' UTILITY & DRAINAGE EASEMENTS EACH  
SIDE OF PROPERTY LINES AS INDICATED  
BY DASHED LINES EXCEPT AS OTHERWISE  
SHOWN.

\*SEE AMD. PLAT OF SKYLINE  
EST. SUB. NO. 4 LOTS 28-33  
& SKYLINE EST. SUB. NO. 3  
LOT 19, IN BOOK 38, PAGE 67  
OF RECORDS.

FOR COMPLETE ENG DATA SEE  
ORIGINAL DEDICATION PLAT IN  
BOOK 34, PAGE 40 OF RECORDS.

\*FOR TAX PURPOSES ONLY\*